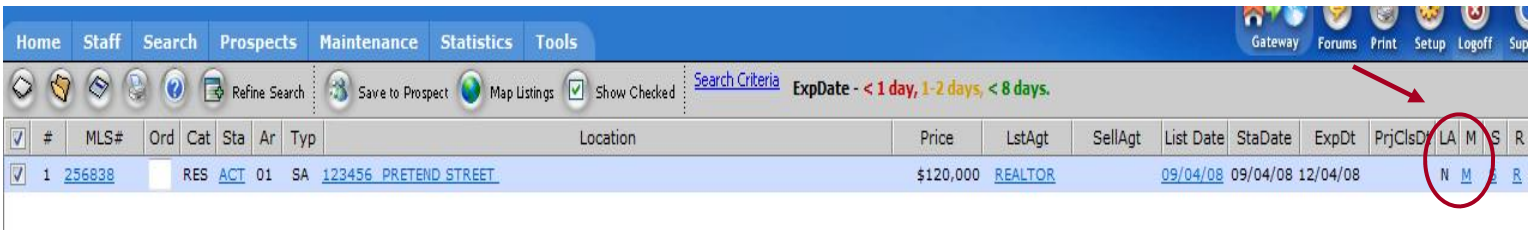
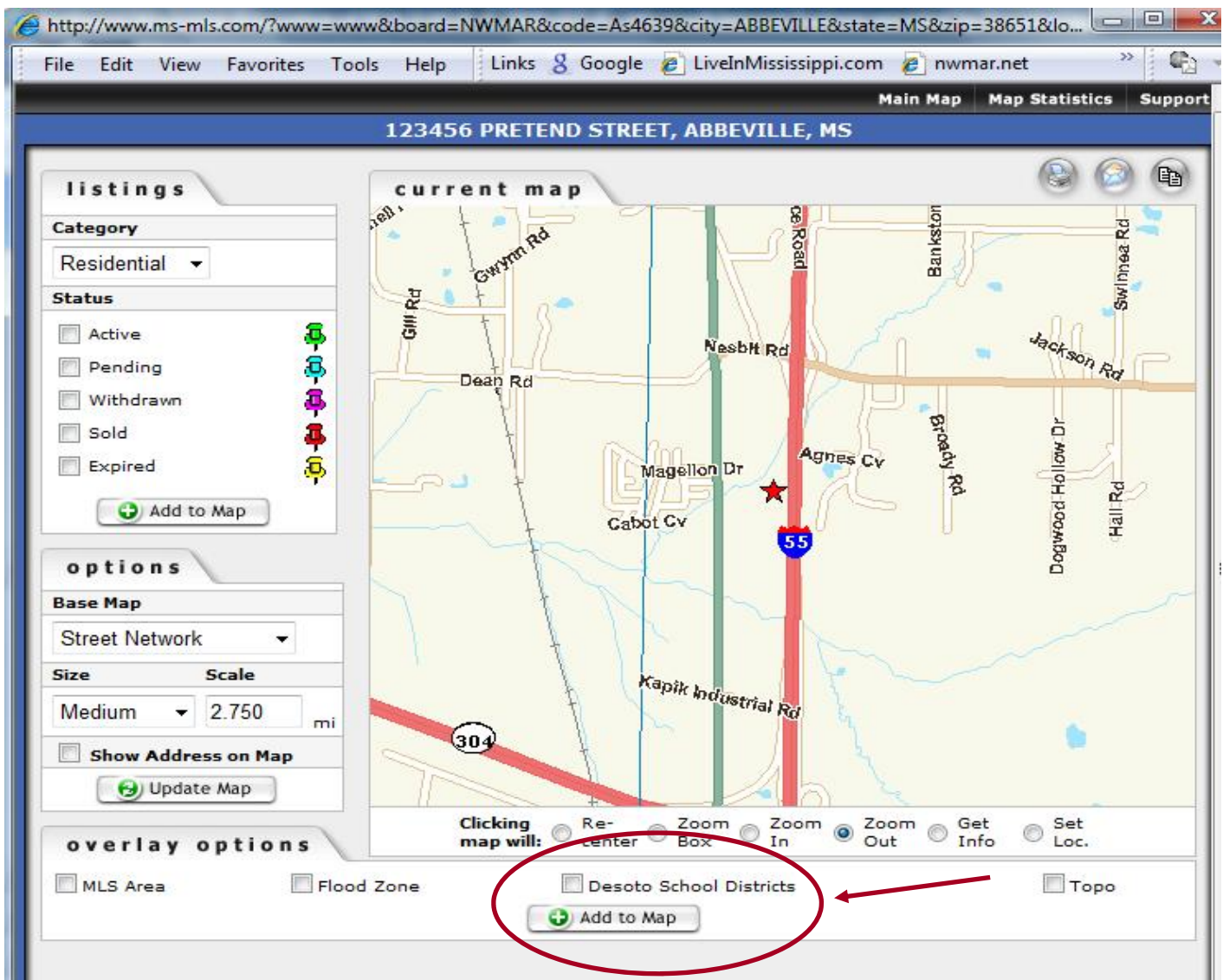


# How to determine DeSoto County School District in MLS

- From the Home page in MLS click on “[Inventory](#)”
- Choose “[Residential](#)” and “[Active](#)” then click “[Accept](#)” (This will bring up a list of all of your active listings that need to be updated).

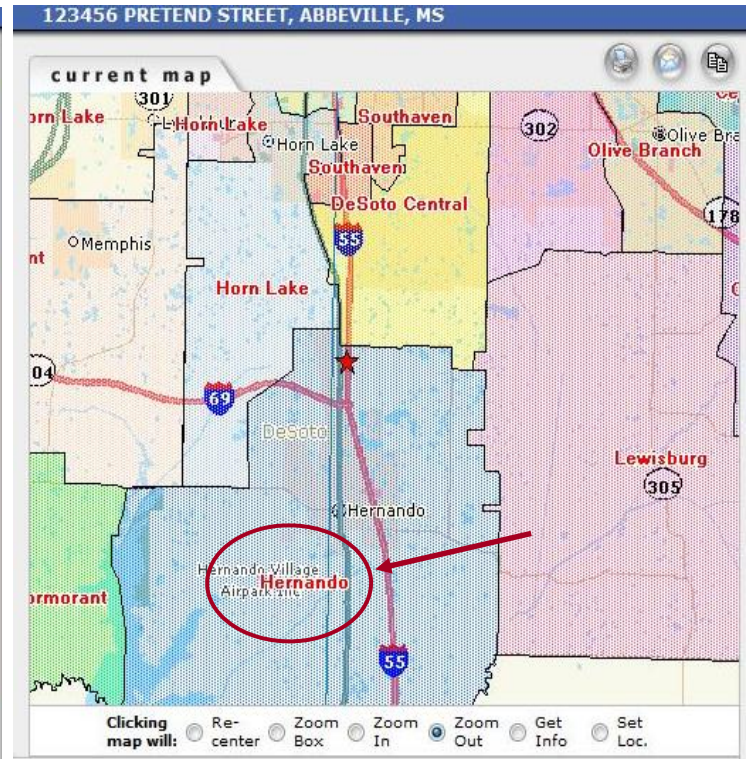
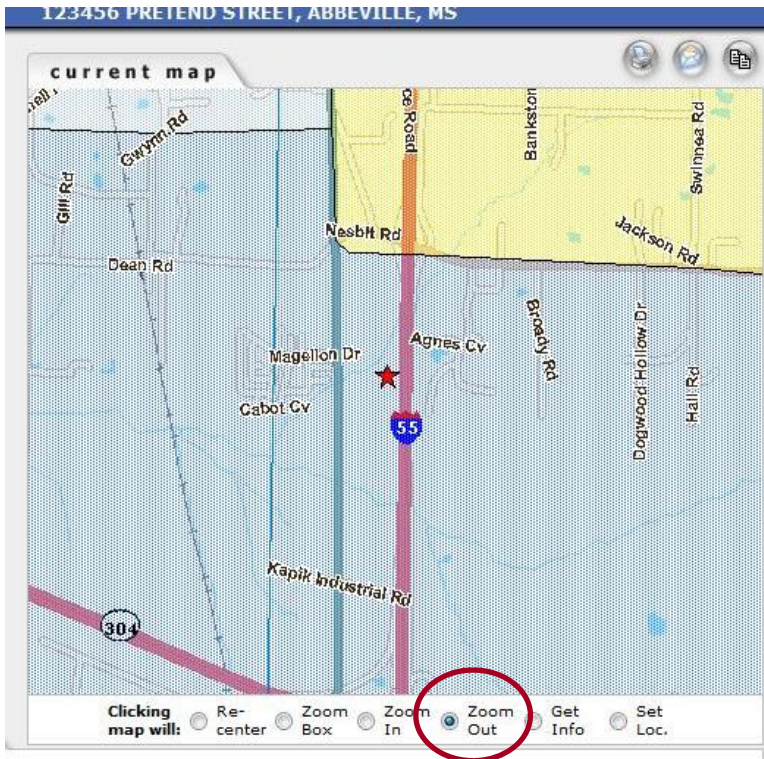


- Click on the link marked “[M](#)”. This will bring up the mapping area. *Please note that listings HAVE TO BE mapped CORRECTLY in order for this process to work!*



- Click on the box marked “[DeSoto School Districts](#)” and then click on the button marked “[Add Overlay](#)”.

- Map will then turn a different color.
- Click on “[Zoom Out](#)” under the map. Then click on the map and zoom out until you can see the names of the school districts.



- In this particular listing the star falls in the light blue area that is the Hernando School District.
- Once you have verified the district, then you can go to [Maintenance](#), enter the MLS number and click on “[Change Listing Info](#)”.

Questions? Please call the Board Office at 662-449-3553.